



Dundeeecom; The Case for a Decommissioning Hub

CALLUM FALCONER
CHIEF EXECUTIVE
DUNDEECOM



The case for a Decommissioning Hub

Callum Falconer



FORTH



dundee.com

"to Make Dundee the Decommissioning Hub for the UK Continental Shelf"

Board of Directors

Callum Falconer, Chief Executive

Charles Hammond, Chief Executive, Forth Port Limited (Chairman)

Ellis Watson, Executive Chairman, DC Thompson

David Martin, Chief Executive, Dundee City Council

Mike Galloway, Executive Director, Dundee City Council

David Webster, Port Manager, Forth Ports Limited

Strategy

Establish the Port of Dundee as a recognisable, prominent and capable Port, by

- Offering turnkey, bespoke services through collaborative relationships across the supply chain
- Leverage the flexibility and breadth of offering via the ports and deep sea anchorages in the Firths of Tay and Forth
- Market the Port to the supply chain

Strategy

Advocate Dundee as The UK Decommissioning Hub, by

- Establishing and promoting the existence, identity and vision of Dundecom
- Presenting a compelling case to the supply chain that Dundee can be an enabler, and 'spear point' into the market
- Promoting a culture of commercialising ideas by connecting innovation, research and development, testing a marketing through a 'virtual' R&D centre

Forth Ports

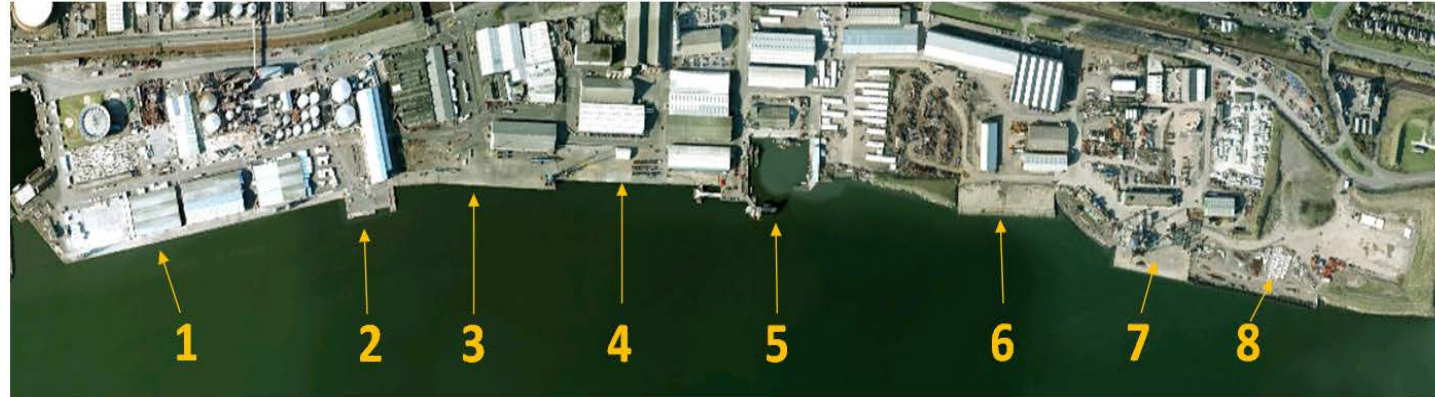


Scottish Ports

- | | |
|---------------|---------------|
| ▪ Leith | ▪ Rosyth |
| ▪ Grangemouth | ▪ Kirkcaldy |
| ▪ Dundee | ▪ Methil |
| | ▪ Burntisland |

- 4 major port operations in the UK
- Tilbury, Grangemouth, Leith & Dundee
- 4 smaller regional ports
 - Methil, Kirkcaldy, Burntisland & Rosyth
- Operates Hound Point & Braefoot Bay terminals
- Statutory Harbour Authority in the Forth and Tay Estuaries and freehold land owner in all of its ports

Port of Dundee



No.	Wharf/Facility	LOA	Draft	Deck Loading Capability
1	King George V Wharf	445m	8.5m	2.5 -5t/sqm UDL
2	Caledon West Wharf (Fuel Bunkering Berth)	76m	9.5m	1.5t/sqm UDL
3	Princess Alexandra Wharf	256m	8.0m	5t/sqm UDL
4	Eastern Wharf	213m	8.0m	5t/sqm UDL
5	Tidal Basin	N/A	N/A	-
6	Caledon East Wharf	-	-	-
7	Prince Charles Wharf Existing	114m	9.0m	8.8t/sqm UDL
8	Prince Charles Wharf Construction	200m	9.5m	80t/sqm

Port of Dundee – East side



East of Port = 61 Acres

Forth and Tay Decommissioning



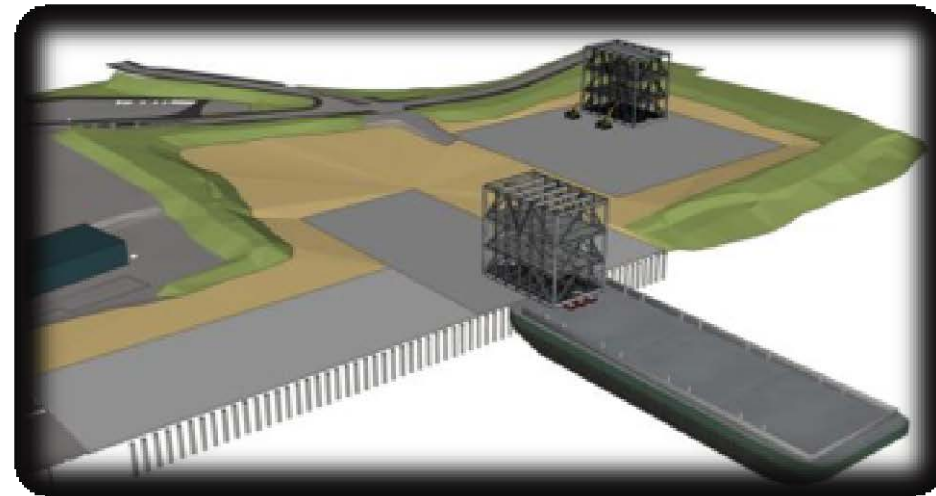
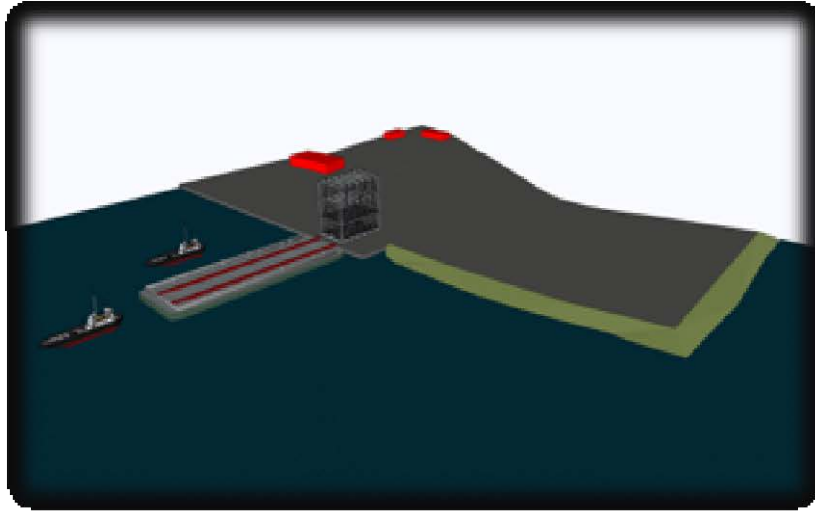
- **Forth and Tay Decommissioning** provides an integrated, end to end approach to the decommissioning of North Sea facilities and structures
- We offer capability, capacity, expertise and location: 3 ports and 2 estuaries.
 - Deepwater Anchorages in the Firth of Forth (30m of Water)
 - Dundee Facility Upgrades
 - Enclosed Dock in Leith including a Dry Dock facility
 - Supply Chain Partners
- We can create a solution to meet the varying requirements of the decommissioning industry
- One stop shop in Dundee

Integrated, on-site Supply Chain



- Vessel Offload onto Quayside
- Internal Transfer to one of three facilities

Port of Dundee Decommissioning Facility





dundeecom

www.dundeecom.co.uk