

# CREATING NEW HORIZONS IN OFFSHORE ENERGY

---

JILLIS KOCH & BOB CROWE

---












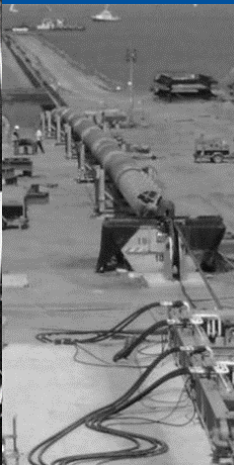








28<sup>TH</sup> JANUARY 2021

---

DECOM LIVE 2021

Picture: Aberdeen Offshore Wind Farm, EPCI Balance of Plant, Boskalis, 2018

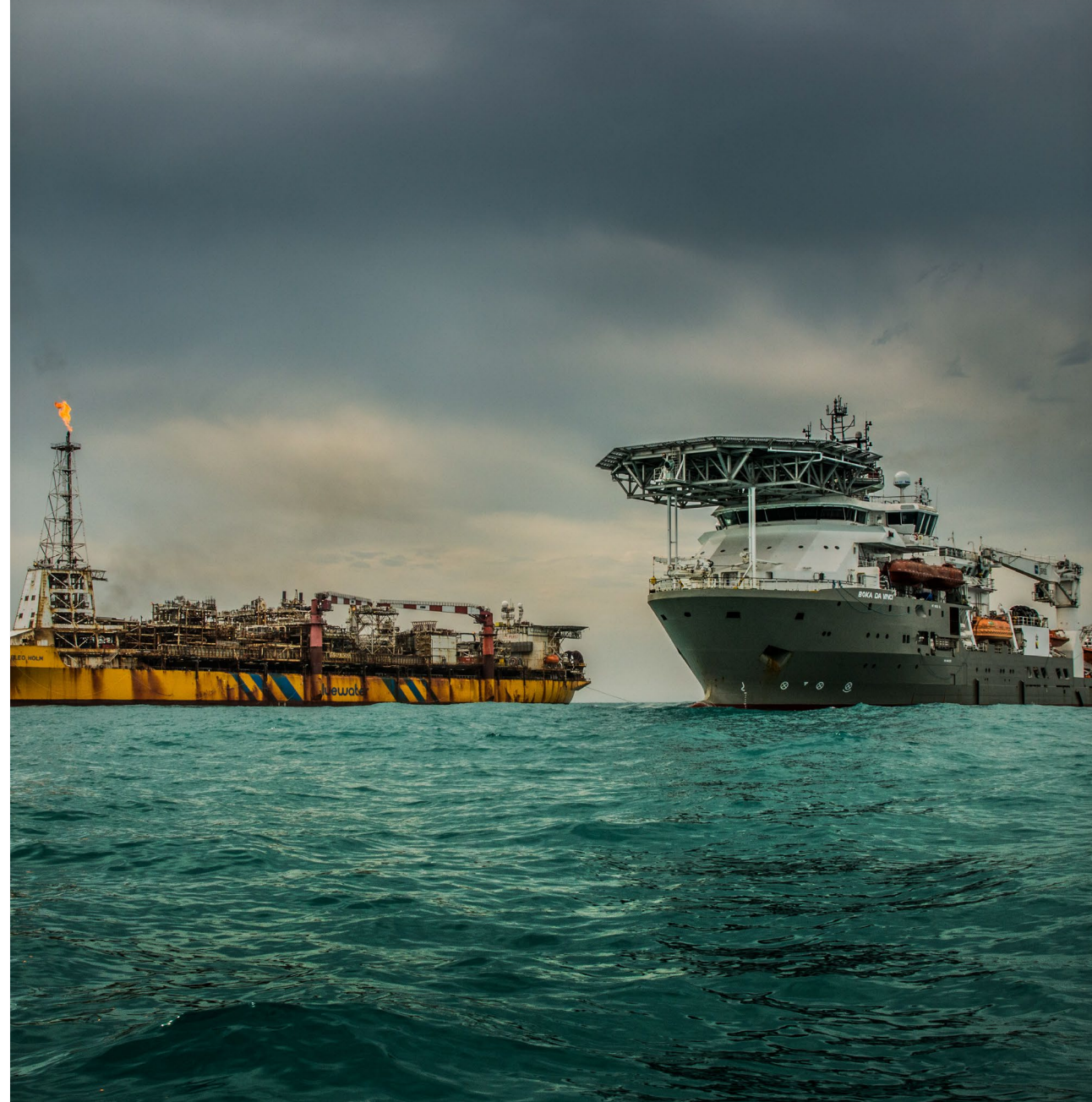
# OUR HISTORY

										
<b>1910</b>	<b>2000</b>	<b>2010</b>	<b>2011</b>	<b>2013</b>	<b>2014</b>	<b>2016</b>	<b>2017</b>	<b>2018</b>	<b>2019</b>	
Dredging	Landfall construction	Salvage & towage	Civil infrastructure	Heavy marine transport and installation	Long-distance ocean towage, station keeping and mooring installation services	Offshore wind farm installation & subsea cable installation	Survey	Subsea Services Marine installation	Survey Subsea cable installation	
										

**A LEADING PLAYER IN OIL & GAS AND RENEWABLES**

# CREATING NEW HORIZONS

- Acquisition by Boskalis Subsea Services of Rever Offshore on 23<sup>rd</sup> December 2020;
- Bringing together 35 years track record in delivery of subsea diving projects;
- Safety and quality at the forefront;
- Strengthened fleet and team;
- Increased knowledge and track record;
- Culturally aligned - remaining agile and nimble;
- Strong IRM focus with ability to deliver larger projects;
- Sustainable financial platform for growth;
- Aberdeen HQ & North Sea Execution Centre;





# OUR OFFSHORE ENERGY DIVISION



**Heavy Marine Transport**



**Marine Services**



**Offshore Heavy Lifting**



**Subsea Services**



**Survey**



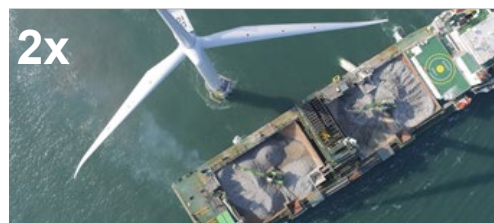
**Seabed Intervention**



**Subsea Cables**



# OUR OFFSHORE WIND SPECIALIST FLEET





# OUR OFFSHORE WIND ACTIVITIES



Unexploded ordnance



Geotech- & physical survey



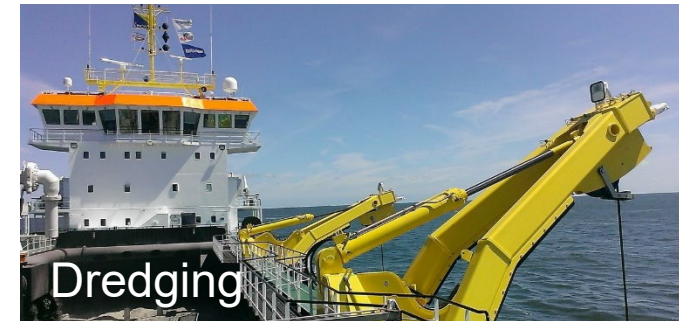
Engineering



Transport & Logistics



Mobilisation



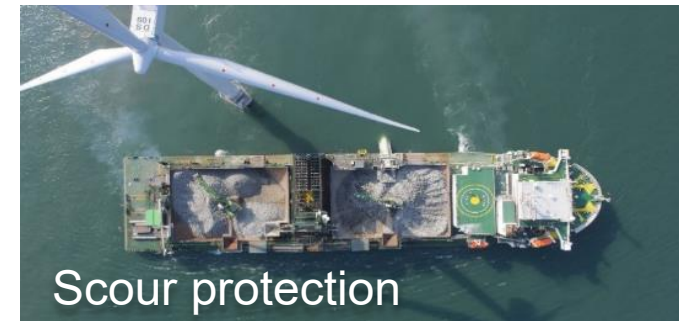
Dredging



Foundation installation



Cable laying



Scour protection



# ABERDEEN BAY : EPCI JACKETS (11)



- North Sea, United Kingdom
- JV Vattenfall / AREG
- BOP 11 foundations (EPCI), inter array and export cables and WTG T&I



# EAST ANGLIA 1 : T&I JACKETS (67)

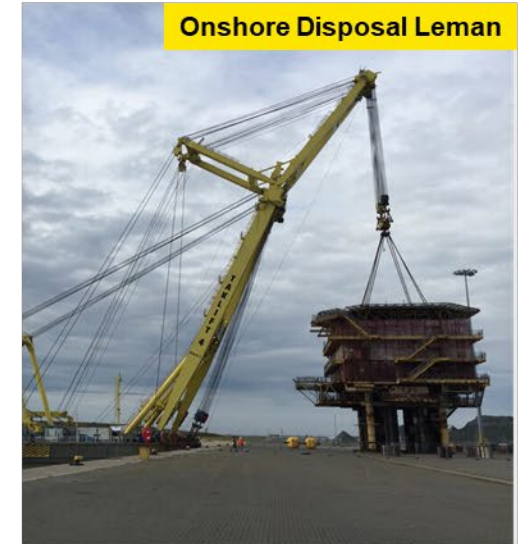


- North Sea, United Kingdom
- Van Oord | Ultimate Client: Iberdrola
- Transport and Installation of pin piles for 102 jacket foundations + 67 jacket foundations



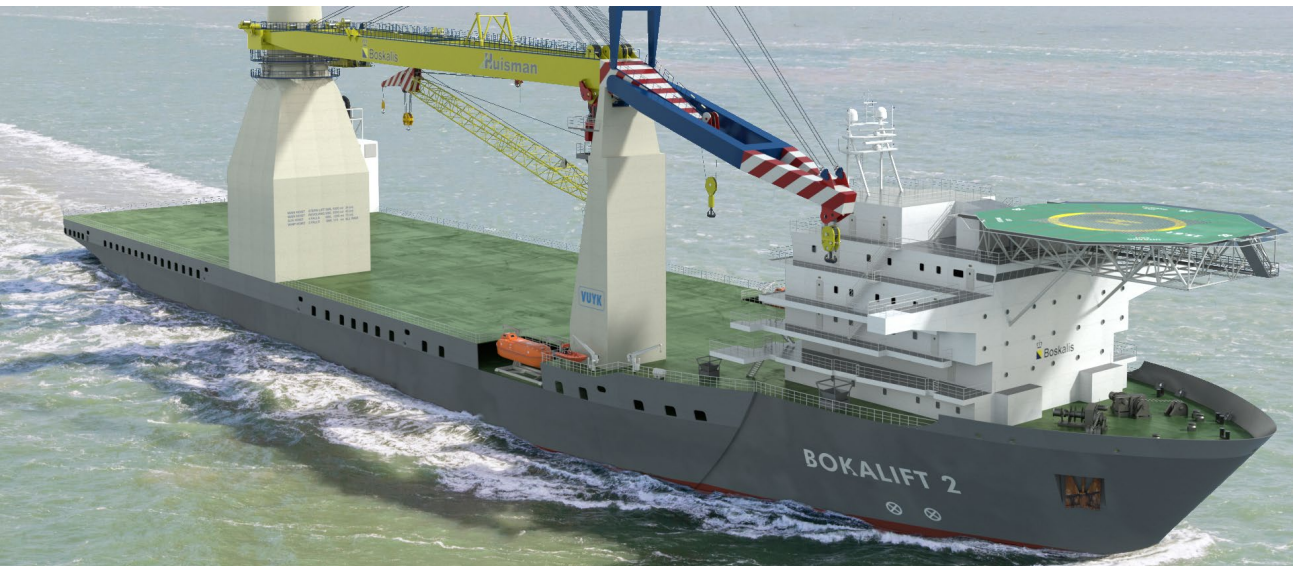
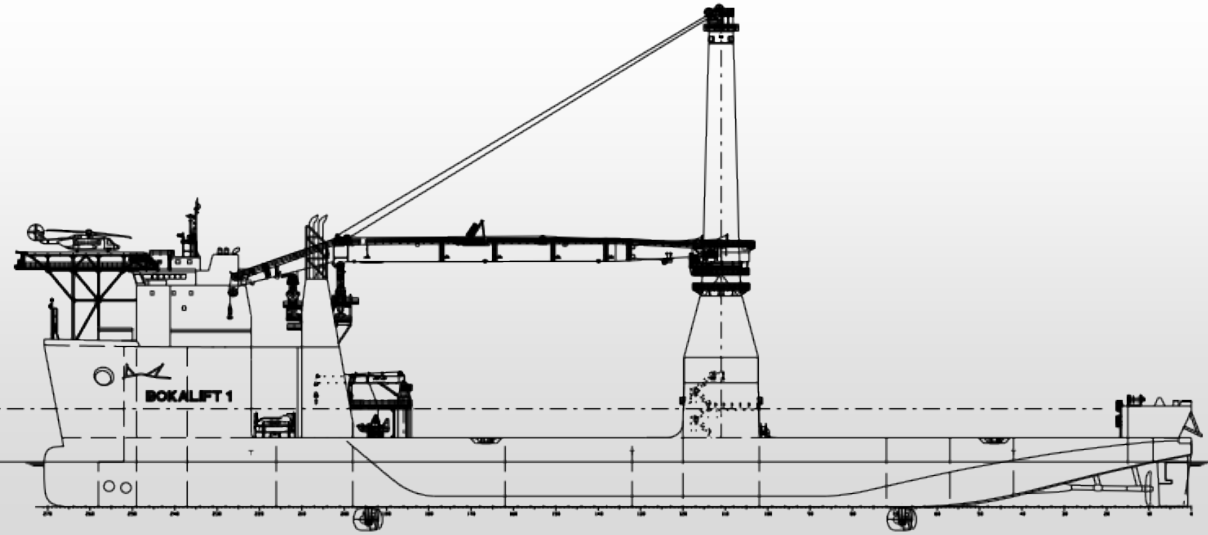
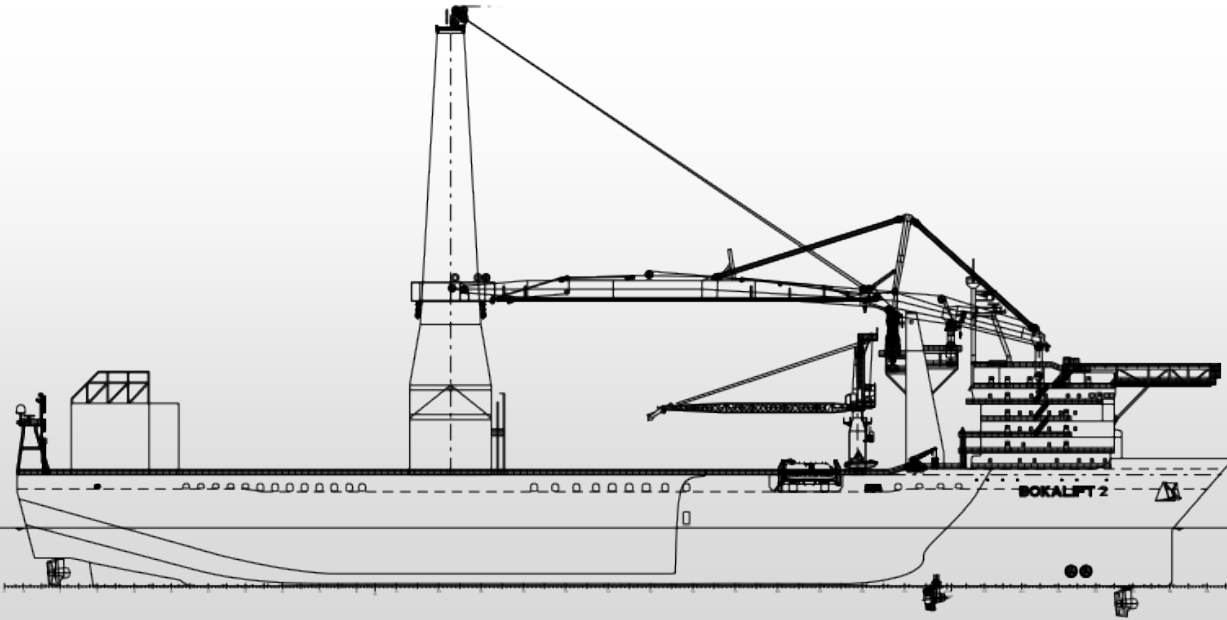
# Boskalis Offshore Decommissioning

- Proven Decommissioning Solutions
- Boskalis' decommissioning solutions cover the entire decommissioning process – from preparation through to dismantling, transport and onshore recycling and disposal.
- The added value of Boskalis is having the expertise and the floating and subsea assets in house
- Boskalis, active in decommissioning offshore facilities since 1989 has removed and disposed of topsides and subsea facilities such as Espana, K10-V Satellite Platform, P14-A platform, L13-FH, Q8-A & B, Viking/Vulcan and L10 C/D & G

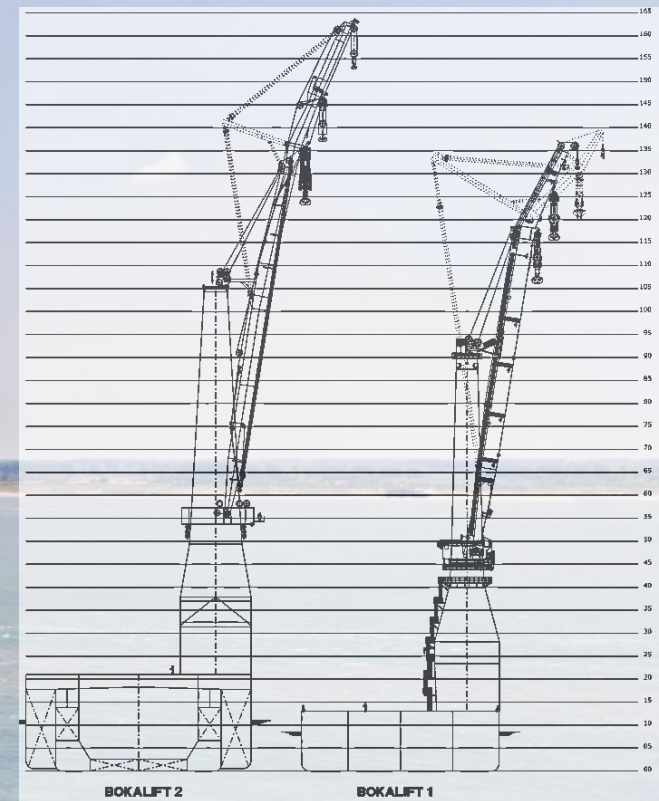




# ONE SHOP - TWO WIND HEAVY LIFT VESSELS









An aerial photograph of a large offshore supply vessel, the BOSKALIFT 1, carrying a massive wind turbine tower section. The tower is supported by a complex yellow and brown steel structure on the deck. The vessel is moving through greenish water, leaving a white wake. The name 'Boskalis' is visible on the side of the ship. The text 'CREATING NEW HORIZONS' is overlaid in the top right corner.

**CREATING  
NEW HORIZONS**

**Thank you for your attention!**