

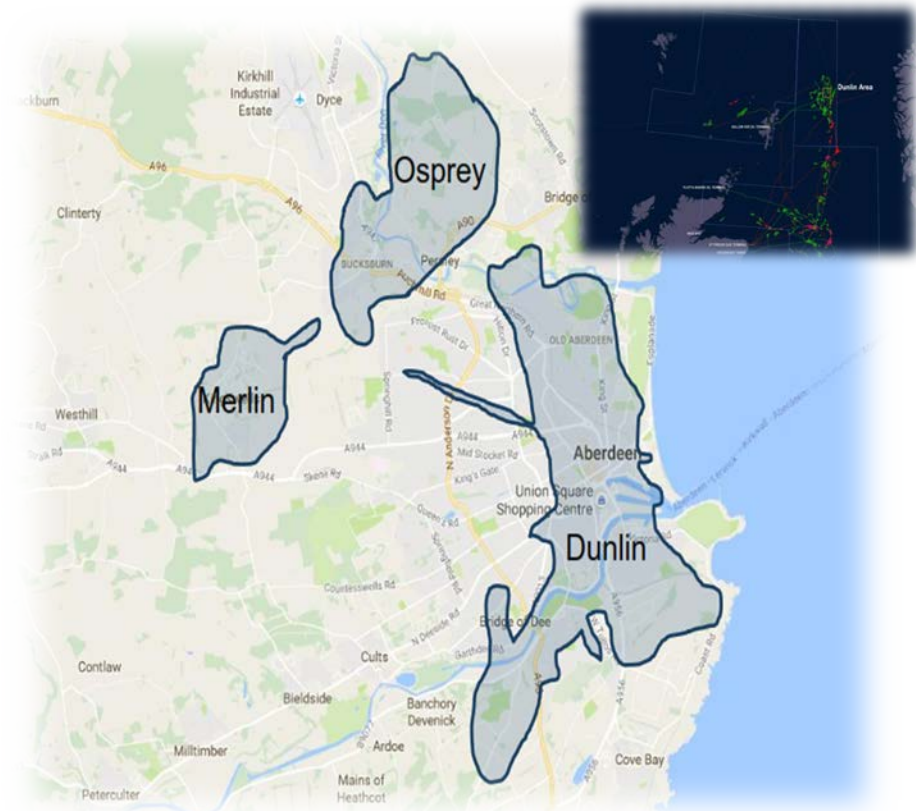
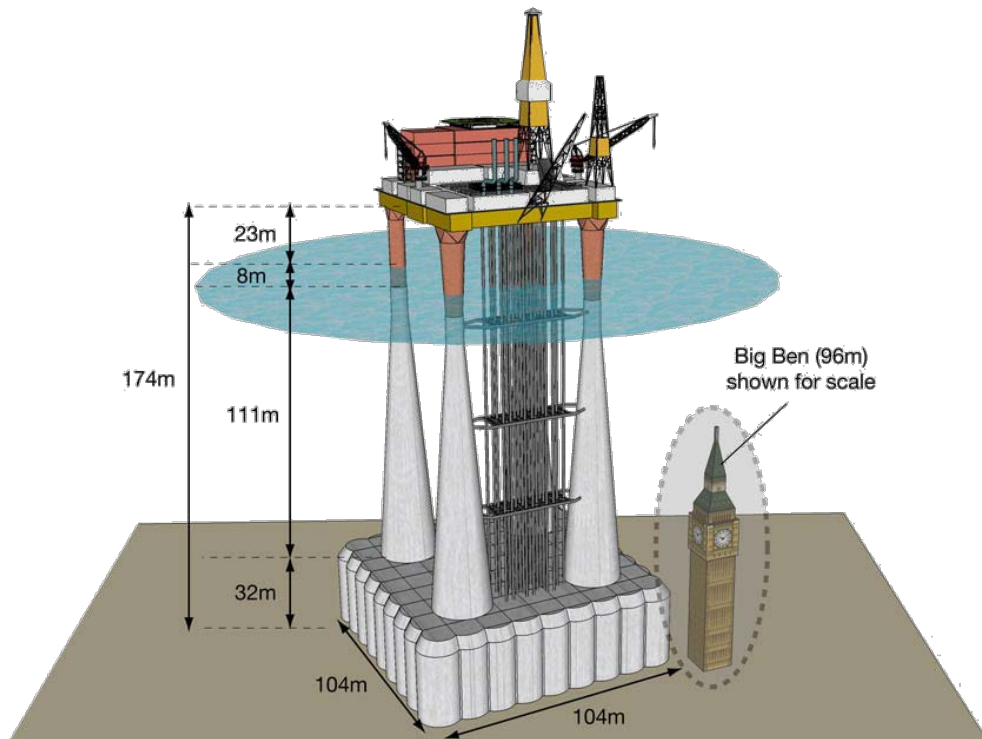


Decom**Energy**

Decom Energy Limited **Dunlin Project Update**

Decom North Sea
21st March 2018





Greater Dunlin Introduction

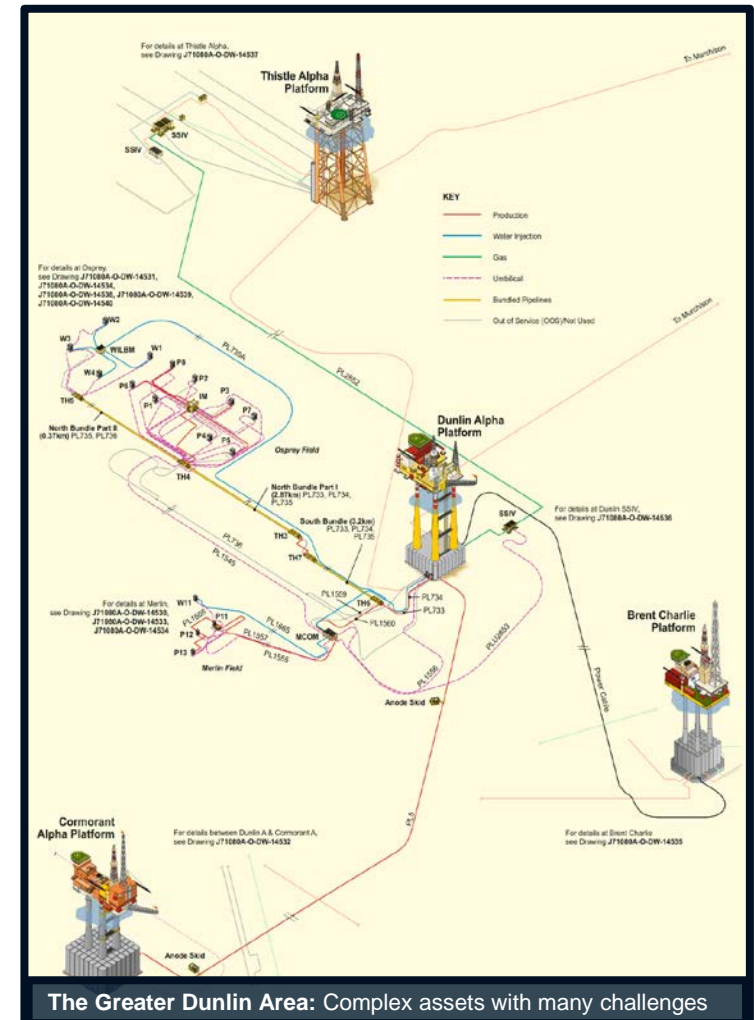
- 195km NE of Lerwick, Shetland
- First oil 1978
- 522 million barrels of oil recovered from 4 fields during 37 years in operation
- Concrete Gravity Based platform in 150m water
- 45 platform and 16 subsea wells
- CGBS weight ~ 320,000 tonnes; Topsides weight ~ 20,000 tonnes

- 3 Subsea Infrastructure DPs approved Q4 2017
- CA supporting studies at an advanced stage
- Stakeholder engagement activities
- External CA being scheduled for 2nd March
- Dunlin A DP submission 1H 2018

- Hub Management

- SID EPRD contract award
- Dunlin A topsides EPRD contract out to tender

- 17 Dunlin A wells Phase 2 abandoned
- Subsea P&A forecast completion end 2018
- SID execution to commence Q2 2018
- Technical challenges being embraced and pioneering solutions developed



Subsea Wells

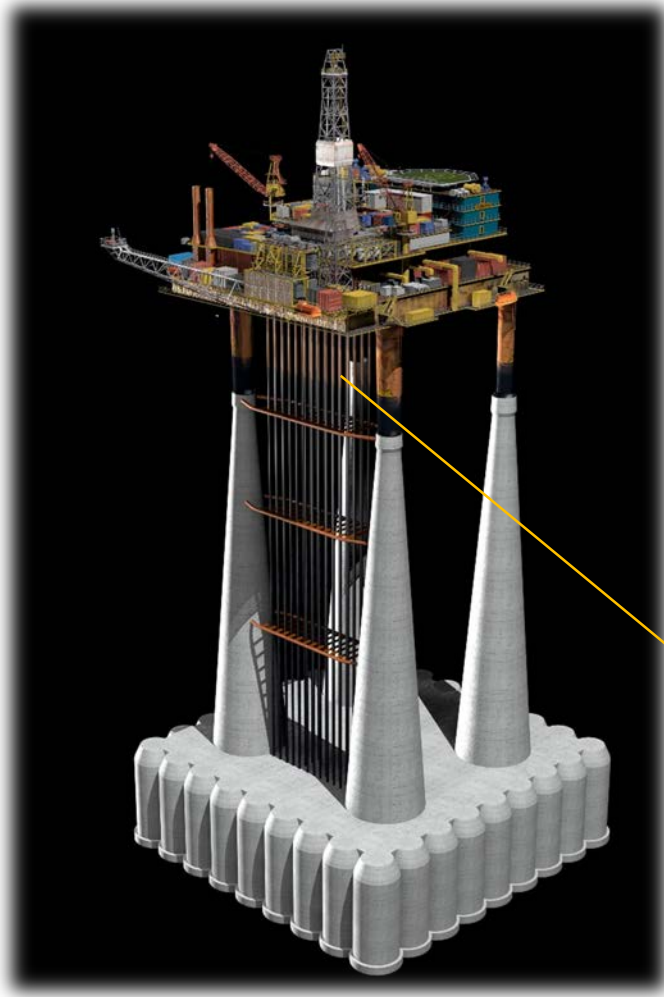
- ROV tooling designed to remove majority of diver based intervention
- Modification of original equipment to facilitate batching approach
- Use of latest casing recovery technology



Platform Wells

- Optimised well abandonment design through subsurface analysis
- Well sequencing
- Integrated planning

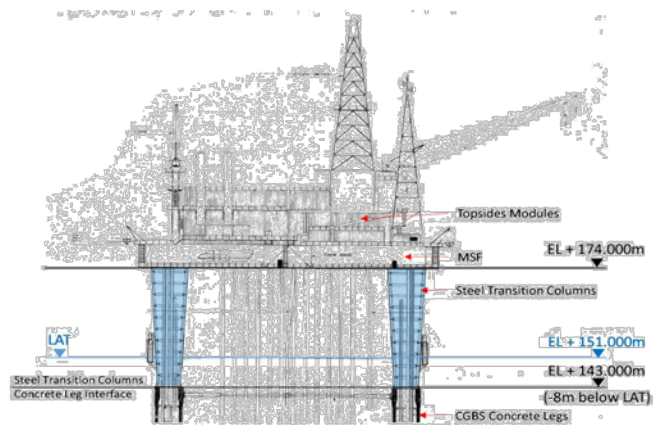




- Unique conductor challenge due to integrity issues and external appurtenances
- Integrated planning to remove conductors in parallel with ongoing Drill Rig P&A activities
- Conductors to be removed in summer campaigns with combination of methods
- Target to remove 75% of conductors prior to completing scope with Platform Rig
- Reduction in post P&A platform running duration



- Reverse Installation remains the reference case for Topsides Removal
- Novel solutions invited through the tender process
- Four candidates remain in the Comparative Assessment process for the CGBS



Leg transitions at -8m

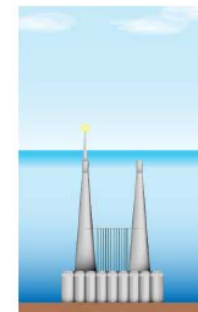
Comparative
Assessment
Candidates



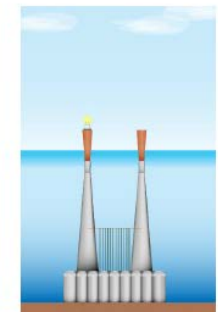
Full Removal
(Option 4)



IMO Cut (-55m)
(Option 6)



Shallow Cut
& Navaid Tower
(Option 5)



Transitions Up
(Option 9)

